

# I-METER FUEL TRACKING SYSTEM

The i-Meter GPS truck tracking system allows you to monitor fuel deliveries online and in real time.

The i-Meter system is a small plug and play vehicle-tracking device that connects to your Liquip electronic register or combined register and Diptronic level gauge CPU and instantly records and reports all tanker flow and product level activities on a 24/7 cloud based system\*.

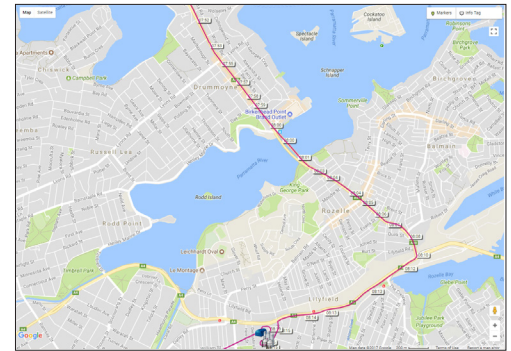
The i-Meter provides a detailed, real-time picture of your vehicles' movements and delivery activity. As each day progresses, the i-Meter dashboard plots a sequential, graphic trail of routes and deliveries on a customised dashboard.

A quick inspection of the i-Meter dashboard reveals the current location of any vehicle in your fleet, where it has been, and how long it was there. Pdf copies of delivery tickets are available online seconds after the delivery, or these can be programmed to be sent to a nominated email address. With this information at your fingertips, you can instantly locate the best vehicle for unplanned calls, confirm deliveries, detect and prevent product loss and missed deliveries, and resolve customer disputes quickly and confidently.

The i-Meter online dashboard also provides tools that extend beyond daily fleet management. i-Meter compiles your delivery data into detailed vehicle, driver and depot performance reports. Close evaluations of these reports can lead to significant improvements in operational efficiencies. For example, an analysis of drive times and delivery times can inspire informed batching decisions that reduce route times and improve driver performance.



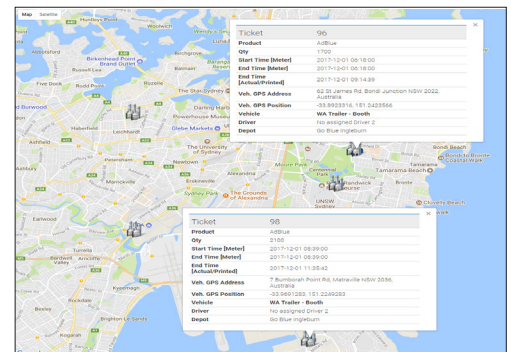
i-Meter Fuel tracking unit



Breadcrumbs Trails via Online dashboard

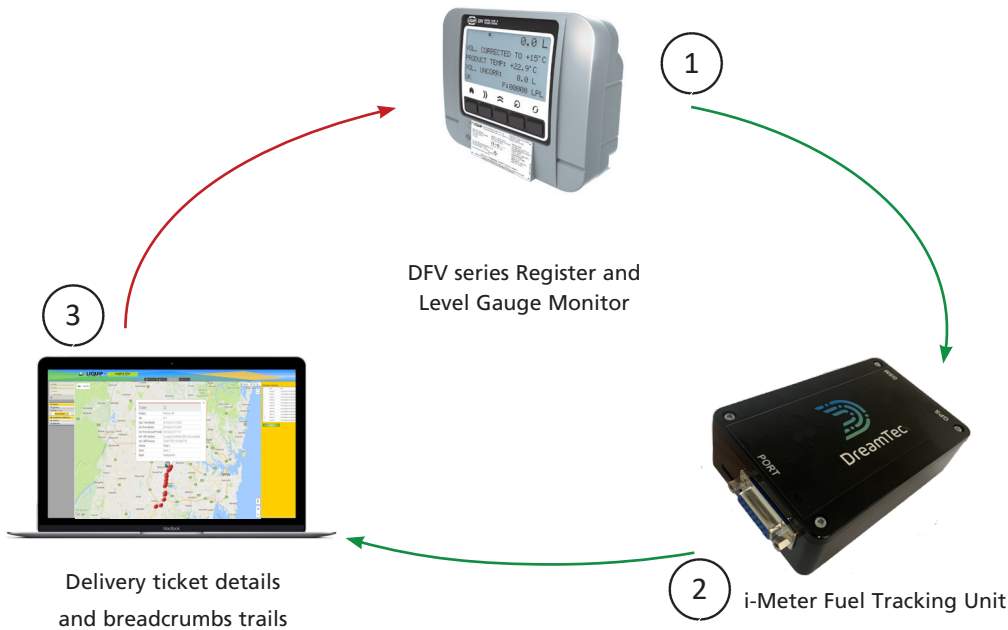
## Features and Benefits

- Secure 24/7 cloud based dashboard.
- Simple, low-cost setup and installation.
- Dashboard requires no IT setup or software installations.
- Real time GPS tracking of Stock and Vehicle using Google Maps.
- Ability to set Geo fences to know when a truck enters or leaves a predefined location.
- Easily locate any vehicle in your fleet and know where it has been.
- Reports tanker route, delivery activity, product type, flow quantity, time and date.
- Reduce overtime costs and fleet fuel consumption.
- Low up front & monthly costs.
- Visual LEDs provide powerful diagnostics during in-field use.
- Delivery information is displayed in E-ticket format. This information, helps to eliminate fraud as any stock discrepancies can be easily identified.



Delivery Ticket Details

\*Diptronic interface is currently in testing. Release date to be advised.



1. Delivery is completed and ticket printed via the DFV.

2. i-Meter records this information and sends it to a secure cloud-based sever.

3. The delivery information and GPS coordinates are displayed on a user-friendly cloud-based dashboard.

## LED Status Meaning

The LED's have an important role to play in the new Version 4 hardware. They can be used for diagnostic purposes and tell you what is functioning.



LEDs next to DB connection

The LED's for the main device application have the following meanings:

**GREEN:** Power Indicator, should always be ON.

**RED:** Should flash initially which indicates that it's trying to acquire a GPS fix. Once a GPS fix is acquired it should remain solid.

**AMBER:** Should flash initially which indicates that device is trying to acquire a GSM data signal. Once a connection has been established with a host it should remain solid.

**BLUE:** This should flash and whenever a Bluetooth connection has been established, this should stay solid.

## Technical Information

Size	36.5 (1.44") x 120 (4.72") x 80mm (3.15")
Materials	ABS Plastic (enclosure)
Temperature Rating	-40° to 55°C (-40° to 131°F)
Operating Voltage	24VDC; 9 to 40VDC operating range
Power Consumption	70mA typical (GPS tracking) 100-500mA peaks during transmission
Mobile Coverage	Telstra Network

## Ordering Information

Please contact Liquip for a product demo and ordering information.

## Associated Equipment

- DFV100 - DFV Register.
- DFV103 - DFV Level Gauge CPU.
- DFV101 - DFV Register / Level Gauge CPU.