

Liquip LBM800 Balance Assembly New and Retrofit Survey Sheet

Customer:

Site:

Address:

Measured by:

Number of arms required:

NDT required:

Paint:

Riser flange heights from road, in mm
(4" ANSI 150 RF)

Position	Measured	Ideal
1 st arm	<input type="text"/>	2850
2 nd arm	<input type="text"/>	3300
3 rd arm	<input type="text"/>	3750
4 th arm	<input type="text"/>	4200
5 th arm	<input type="text"/>	4650
6 th arm	<input type="text"/>	5100

LBM800 can be assembled to be left or right hand as well as upward or downward inlet feed.

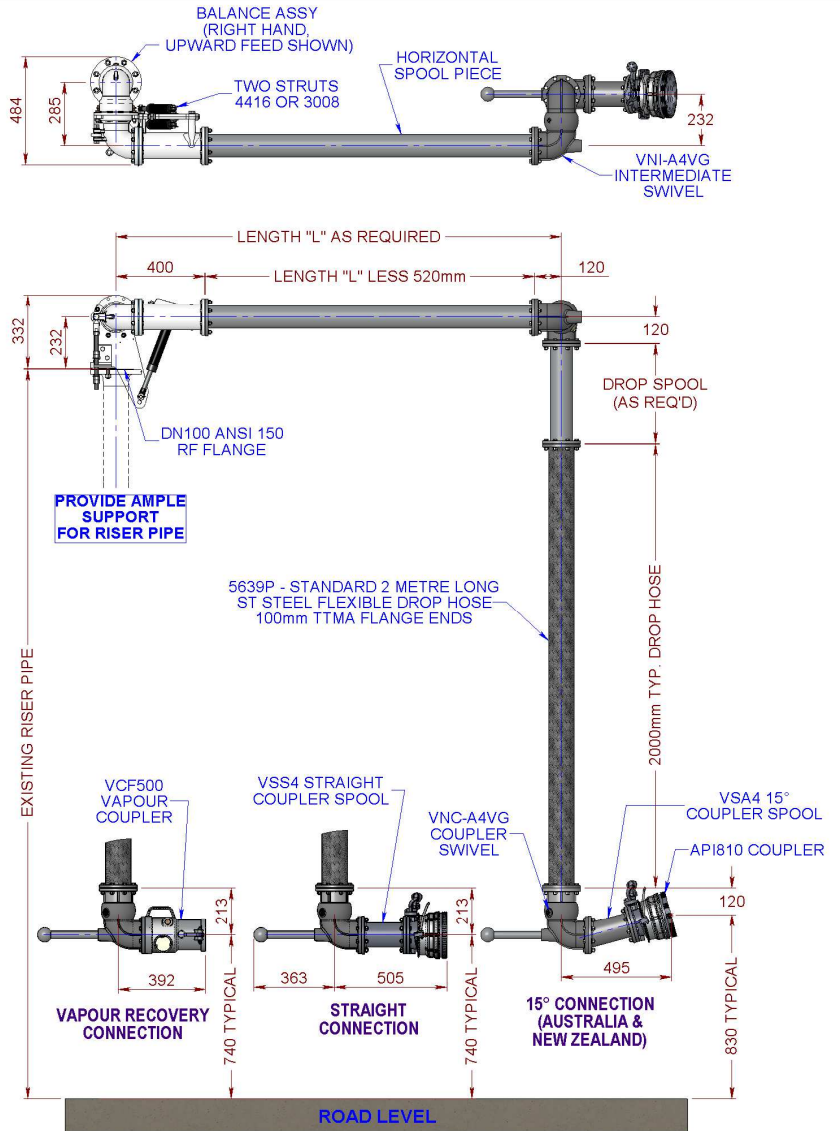
L217 spool is used to raise mount flange to ideal height.

L219* horizontal spool may be aluminium or steel depending on multiple factors.

VNI & VNC-A4 swivels have multiple seal options.

Indicate whether angled (VSA4) or straight (VSS4) coupler spool is needed.

Specify API coupler model (if known).



LIQUIP

See website for Liquip branches and distributors - www.liquip.com

X750015
Issue: A

Part No.	Description	Example	#1	#2	#3	#4	#5	#6	
L217	Riser spool (length)	350							ANSI gasket kit 1 x 4235 Gasket klingseril 8 x 4892 Stud 5/8" UNC x 3 1/2" B7 c/w 2 x 2H nuts each
LBM800	Balance assembly	AVI spec							
L219*	Horizontal spool (length)	1480							
VNI-A4*	Intermediate swivel	VG							TTMA gasket kit 1 x 4248 Gasket klingseril 8 x 6745 Bolt M10 PC8.8 8 x 6744 Nut M10 8 x 5261 Spring washer M10 16 x Flat washer M10
L220A	Drop spool (length)	900							
5639P	Drop hose 2m	x1							
VNC-A4*	Coupler swivel	VG							
VS*4	Coupler spool	VSS4							
API***	API coupler	API725J							
4235	4" ANSI 150 gasket kit	x2							Typ 1 per arm, 2 if riser spool used
4248	4" TTMA gasket kit	x7							Typ 7 per arm, 6 if no drop spool used

www.liquip.com

Liquip International Pty Ltd

ABN 63 112 087 448
13 Hume Road Smithfield, NSW 2164 Australia
PO Box 7049 Wetherill Park, BC NSW 2164
T: +61 2 9725 9000
F: +61 2 9725 1252

ONE COMPANY. ONE WORLD. ONE SOURCE.™

